



# Premium Connectivity Products



# Today's campers want to stay “connected”

- **58% of RVers work remotely at least part-time while on the road.**

Escapees Survey 2019

- **84% of respondents in a recent RV owners survey said: “Their cell phone enhances their camping experience.”**

Drivin'vibin Survey 2020

- **In the U.S., there are now over 1 million people who identify as “Full-time RVers.”**

RV Magazine January 2022

# Connectivity 101

Where we camp can create very different challenges connecting to the internet

- **Campground?** Probably using Wi-Fi.
- **Remote Camping?** Probably a Cell Signal.
- Stand-alone Hot Spot. Which carrier?



# Connectivity 101

## Wi-Fi Connectivity Challenges in a **Campground** setting:

- Too many users.
- Transmitting on older 2.4Ghz Band
- Too far away from Wi-Fi access point
- Slow speeds from internet provider



# Connectivity 101

## History of Wi-Fi: 2.4Ghz v. 5.8Ghz

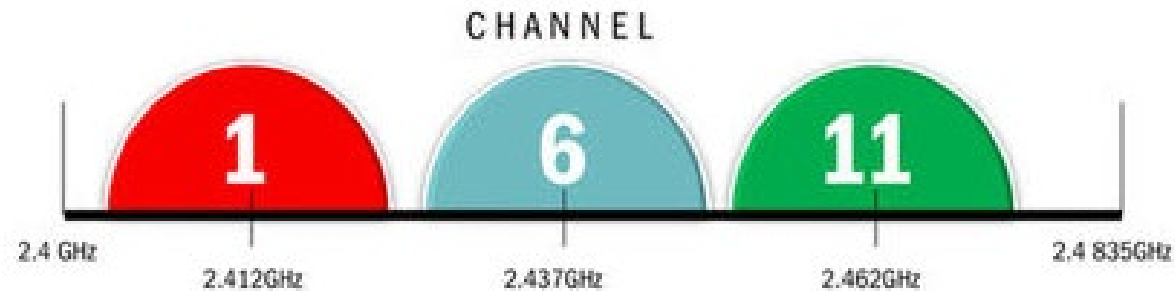
- 2.4GHz Radio Band (UHF) first used for Wi-Fi in 1999
- Best band for distance
- Microwaves, Bluetooth devices, Cordless phones, Baby Monitors, Security Cams, and other electronics may also utilize the 2.4 Band (interference)
- **Narrow bandwidth** limits number of users before Wi-Fi signal degradation
  - SNR – Signal to Noise Ratio; signal level vs. background noise
- **Widely used at campgrounds.** Lower cost transmitters.

# Connectivity 101

## Wi-Fi Spectrum: 2.4GHz v. 5.8GHz

- 2.4GHz (UHF) Three “Channels”

### The Wi-Fi Spectrum: 2.4GHz







# Connectivity 101

## History of Wi-Fi: 2.4Ghz v. 5.8Ghz

- 5.8GHz Radio Band (SHF) First used for Wi-Fi in 2009
- Much less prone to interference
- Signals are more easily absorbed – walls, concrete, glass
- Much broader band

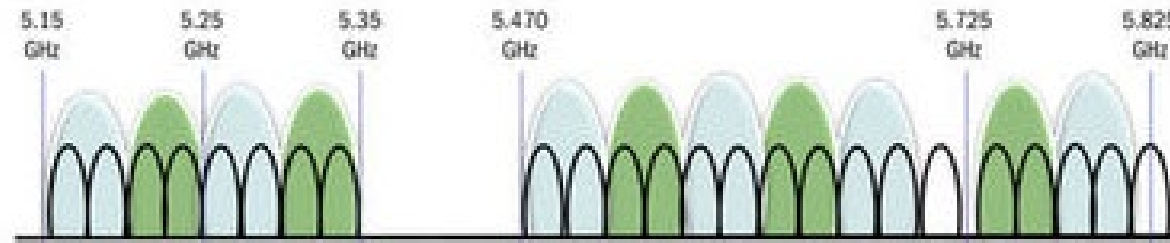


# Connectivity 101

## Wi-Fi Spectrum: 2.4Ghz v. 5.8Ghz

- 5.8GHz Band (UHF) up to Twenty-three “Channels”

### The Wi-Fi Spectrum: 5GHz





# Connectivity 101

## Bandwidth and Speed (Data Transfer Rate)

- Internet speed is expressed in bits per second (bps)
- Campgrounds contract for speed with their service provider - typically 50-300 Mbps
- Netflix requires about 20Mbps to stream 4K HD
- YouTube TV, Sling, and Hulu need about 12-15Mbps
- Amazon Prime only needs about 4Mbps for HD



# Wi-Fi Antenna Suite of Products



**KING** WiFiMax<sup>PRO</sup>



**KING** SWIFT



**KING** FALCON





**5dB Gain Antenna**

KWM2000  
KING WiFiMax  
\$149.99 MSRP  
**\$149.99 MAP**



**Connect  
All Your Devices!**

**KING** | WiFiMax™

## Wi-Fi Router/Range Extender

### Features:

- Dual-band Wi-Fi for long-range (2.4GHz) and fastest speeds (5GHz)
- Four antennas with beamforming technologies
- Plug & play, no install
- Intuitive, one-minute setup process
- Customizable Wi-Fi name/password for security
- Connect all your devices - Phones, tablets, laptops, smart TVs, appliances, speakers, and more

**2x  
Better**  
5GHz +  
2.4GHz

A Wi-Fi source is required for this product.  
The KING WiFiMax router cannot be used as a standalone Wi-Fi hotspot.



Dual  
Band



Beamforming  
Technology



No  
Install



1-Min  
Setup



Password  
Secured

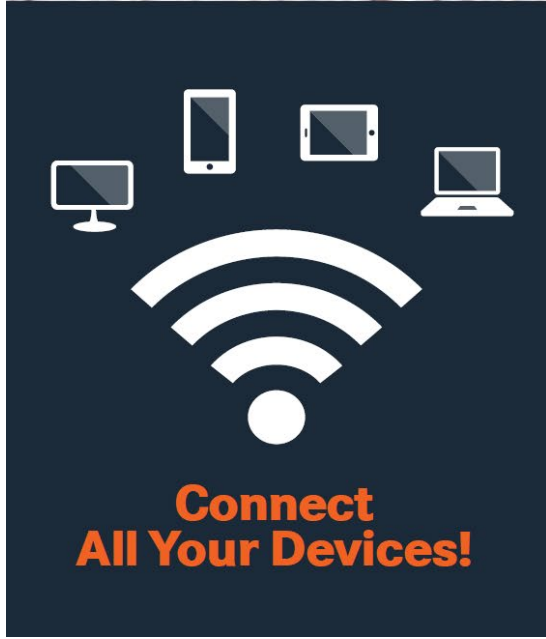


Connect all  
devices



## 5dB Gain Antenna

KS1000  
KING Swift  
WiFiMax bundle  
\$249.99 MSRP  
**\$249.99 MAP**



# KING | SWIFT™

## Roof-Mounted Omnidirectional Wi-Fi Antenna with KING WiFiMax™ Bundle

### Features:

- Antenna extends 2.4GHz for best range plus 5GHz with router for fastest speeds
- Easy to use - Multidirectional signal acquisition
- Easy to setup - Single coax connection
- Only 9.5" tall with slim profile
- Roof-mounted with spring loaded base for impact durability
- Safe and secure internet
- Connect all your devices - Phones, tablets, laptops, smart TVs, appliances, speakers, and more

**3x**  
**Better**  
5GHz +  
2.4GHz

A Wi-Fi source is required for these products.  
The KING WiFiMax router and KING Swift antenna cannot be used as a standalone Wi-Fi hotspot.



Dual  
Band



Beamforming  
Technology



Omnidirectional



Single Coax  
Connection



Spring-Loaded  
Base



Password  
Secured



Connect all  
devices



## 15dB Gain Antenna

KF1000 (White)  
KF1001 (Black)  
KING Falcon  
WiFiMax bundle  
\$699.99 MSRP  
\$699.99 MAP





**Connect  
All Your Devices!**

# KING | FALCON™

## Roof-Mounted Stationary Automatic Directional Wi-Fi Antenna with KING WiFiMax™ Bundle

### Features:

- 10x more powerful antenna than the competition
- High-gain, long-range, directional Wi-Fi antenna
- Antenna extends 2.4GHz for best range plus 5GHz with router for fastest speeds
- Easy to use - Automatically scans and aims
- App driven with free KING Wi-Fi  
- Safe and secure internet
- Impact resistant
- Only 9" tall with single coax connection

**6x  
Better  
5GHz +  
2.4GHz**

A Wi-Fi source is required for these products.  
The KING WiFiMax router and KING Falcon antennas cannot be used as a standalone Wi-Fi hotspot.  
Apple® is a registered trademark of Apple Inc. Google Play™ is a trademark of Google, Inc.



Dual  
Band



Beamforming  
Technology



Automatically  
Scans & Aims



Single Coax  
Connection



Controlled  
With Free App



Password  
Secured



Connect All  
Devices



**Improving your Cellular connectivity when remote camping.**

## Cellular Technology – some more survey stats:

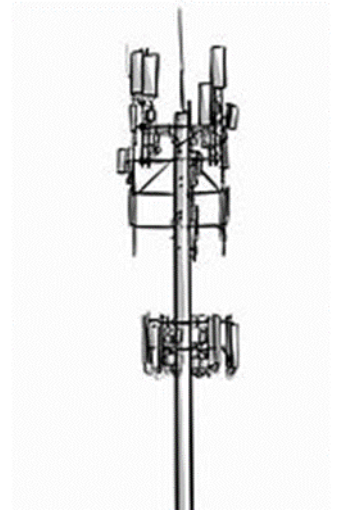
- 96% of Americans own a cell phone of some kind.
- 58% of American Seniors own internet capable Smartphones. Pew Research: 2019
- Americans aged 50+ will spend \$84B on tech products this year. AARP 2019
- 50 million Seniors use a Social Media platform. Retirement Living Magazine 2020
- 77% of Seniors use their Smartphone for directions. 2019 Tech and the 50+ Survey



# Connectivity 101

## Cell Signal Evolution

- 2G in 1991 only enabled talking and texting.
- 3G in 1998 enabled talking, texting, and Internet access.
- 4G in 2007 enabled talking, texting, Internet access, video.  
(4G LTE – Long-term Evolution)
- 5G from 2020-2024 will enable talking, texting, Internet access, UltraHD + 3D video, Smart Home, Artificial Intelligence.



# Cellular and Data Hot Spot Limitations

- Weather.
- Topography.
- Network traffic.
- Building materials; Especially fiberglass, aluminum and glass.
- Cellular Network



# Best Cell Coverage by State

1. Hawaii
2. Florida
3. Maine
4. Montana
5. Wisconsin
6. North Carolina
7. Utah
8. Arizona
9. Oregon
10. Texas
11. Massachusetts
12. Colorado
13. Tennessee
14. Iowa
15. Vermont

16. New Hampshire
17. Ohio
18. New Jersey
19. Connecticut
20. Minnesota
21. Oklahoma
22. Idaho
23. Pennsylvania
24. Nebraska
25. New York
26. Alabama
27. Kentucky
28. New Mexico
29. Wyoming
30. Maryland

31. Arkansas
32. Washington
33. Missouri
34. Mississippi
35. South Carolina
36. Delaware
37. Illinois
38. North Dakota
39. Indiana
40. Louisiana
41. Michigan
42. California
43. South Dakota
44. Kansas
45. Georgia

46. Rhode Island
47. Nevada
48. West Virginia
49. Washington D.C.
50. Alaska

Source: Deadzones.com



## Existing cell antenna solutions for RVers

### Roof mounted Combination 4G/Wi-Fi antennas

- Expensive hardware
- Expensive data plans
- Limited to specific carriers
- Low gain antennas
- May not solve the customer's signal problem



# 4G LTE/5G Cellular Antennas

# KING Extend Pro Premium Cell/Data Signal Booster



verizon® T-Mobile® at&t Sprint

KX2000

## KING Extend Pro™

- *Supports ALL U.S. Cellular Carriers*
- Boosts voice & data dange
- Use while parked or in-motion
- 5G ready and 4G/3G LTE voice and data
- No SIM Cards
- No additional contract – No monthly fees
- Includes roof & pole/ladder mounting brackets

# KING Extend Go Portable Cell/Data Signal Booster



verizon/ T-Mobile/ at&t Sprint

KX3000

## KING Extend Go™

- First of its kind *Portable* Booster Kit
- Two antenna sets – Boost in tow vehicle and RV
- Boosts voice & data; Any cell carrier
- Use while parked or in-motion
- Includes 12v and 110v power supply cables
- Use anywhere with collapsible tripod
- 5G Ready and 4G/3G LTE
- No additional contract – No monthly fees
- Includes roof & pole/ladder mounting brackets

# KING Extend Premium Cell/Data Signal Boosters



- There is more usable cellular bandwidth on the 4G LTE & 5G spectrums than on 3G
- Weak signal strength can revert to lower speed
- The Extend will turn “one bar” into “three bars”
- 5G Ready



-110 to -91dBm

2Kbps-50Kbps

(voice-texting)



-90 to -76dBm

2Mbps

(internet)



-75 to -60dBm or better

1Gbps-20+

(video)





**Taking your Satellite Television on the road.**



## DISH Tailgater

Model DT4400  
Single Output - One Receiver  
\$349 MSRP/MAP



**Pay As You Go**  
No contracts  
No commitment



## DISH Tailgater Pro

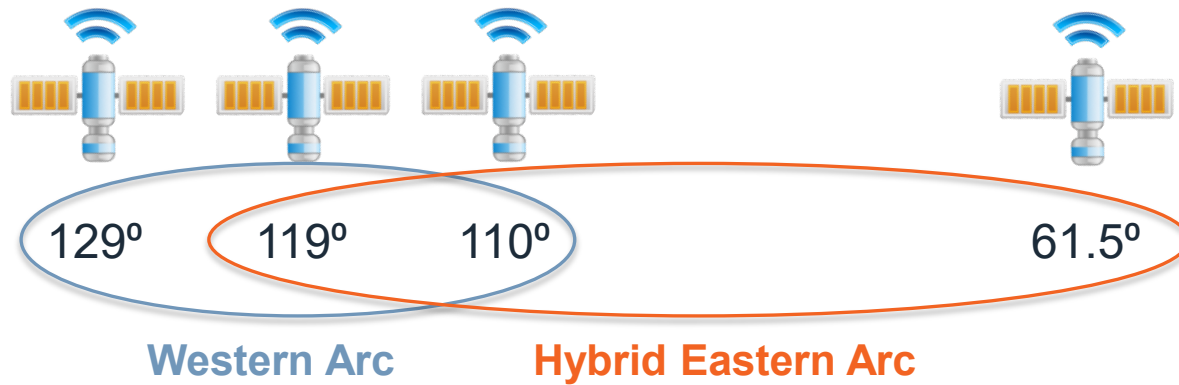
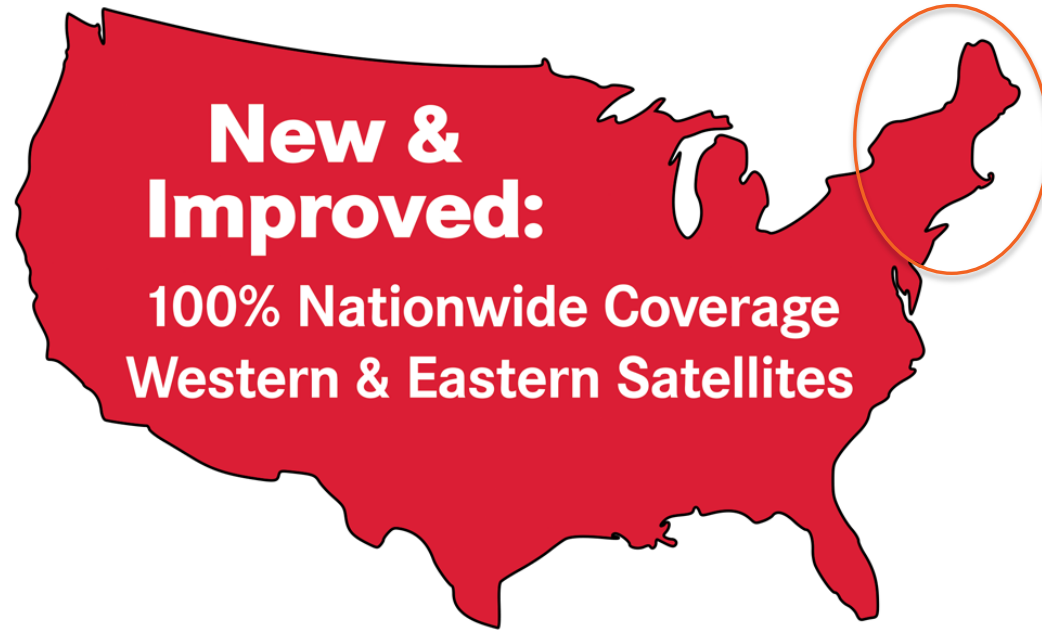
Model DTP4900  
Dual Output- Two Receivers  
\$399 MSRP/MAP

- PRO model - **Always know where it's pointed**
- Portable or Roof-Mountable
- Fully Automatic
- Powered by Receiver
- 2-Year Parts, 2-Year Labor Warranty
- Receives **HD** Programming



# DISH Tailgater Innovation

## Nationwide Coverage



# KING ONE Pro



DIRECTV



BellTV

- Automatically configures for DIRECTV or DISH with no user input
- Re-programs for Bell TV in Canada with no additional components
- **KING exclusive clear dome – Always know where it's pointed**
- Dual output system
- Portable or roof-mountable
- 2-year parts, 2-year labor warranty
- Fully automatic – just press a button
- Powered over coax with in-line power injector – A/C plugin
- Lowest cost unit of its type
- **NEW integrated anti-theft alarm**

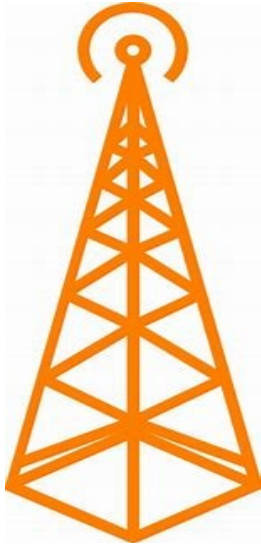


*Model KOP4800*  
\$549 MSRP/MAP

# KING is the leader in Portable Satellite Antennas

- We test 100% of our satellite antennas before they leave the factory.



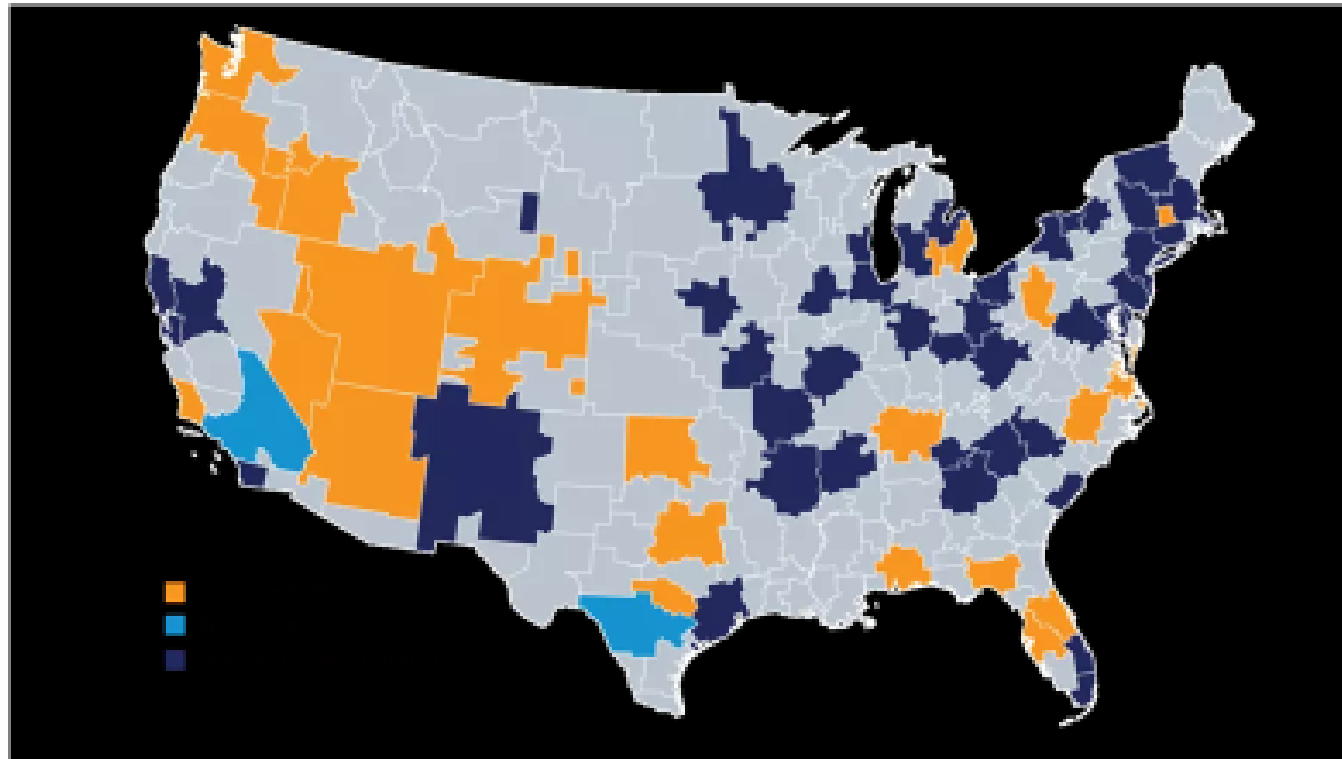


**Over-the-Air Television.**

# ATSC 3.0 Over-the Air Television Signal Evolution



On the air now.  
Next Markets.  
2021 Rollout.



*100% of KING's OTA Antennas are ATSC 3.0 Compatible*





## Directional OTA HDTV Antenna with Mount

The First OTA Antenna  
with a 4-Year Warranty!



Inside controller shown  
with built-in signal finder

- Amplified, ultra-high gain digital antenna
- Long-range signal acquisition – more channels
- Built-in KING SureLock™ signal finder
- Broader reception coverage
- Simple, fast antenna pointing with 360-degree rotation

*Model OA8500 (white)*

*Model OA8501 (black)*

**MSRP \$169.99**







## KING Jack Replacement Head



### Easiest retrofit on the market

- Built-in amplifier for maximum signal gain
- Designed for the new digital TV frequencies
- Includes custom bracket for RV batwing antenna retrofit as well as home mounting bracket
  
- *Now available in black and white*

OA8300 (White)

OA8301 (Black) **MSRP \$69.95**



**KING** | OMNI PRO™

## Omnidirectional HDTV Antenna



- Omnidirectional HDTV antenna
- Amplified for best signal
- No rotation/tuning needed once installed
- Fixed height – no need to crank up or down
- Less expensive than directional antennas
- Receives free VHF/UHF/FM signals

*Model OA1000 (white)*    **MSRP \$109.99**  
*Model OA1001 (black)*

Premium antennas. More powerful. Maximum connectivity wherever you roam.



▶ **KING** | EXTEND

Cellular Booster  
50 Decibel Gain Amplifier



▶ **KING** | FALCON

Wi-Fi Range Extender  
Most Powerful on the Market



▶ **KING** | JACK™

OTA TV Antenna  
75 Mile Range